

LANCASTER Keeping Current

AN ELECTRONIC PUBLICATION OF THE HOURGLASS FOUNDATION

Lancaster County Growth Management Issues

August 10, 2004

FYI

MOUNT JOY BOROUGH NAMES MAIN STREET MANAGER

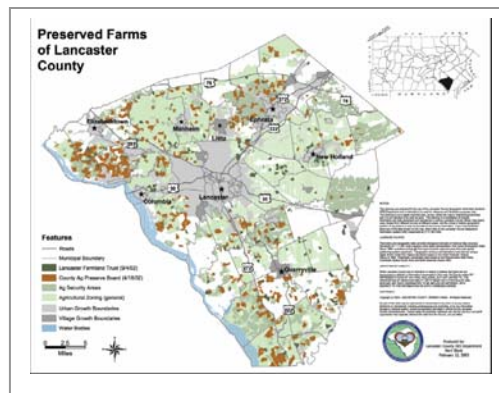
– Allison Weiss, of Lititz has been named Manager of the [Main Street Program](#) in Mount Joy Borough. Allison formerly was a museum director in Sterling, Virginia. In her role, Allison will work to expansion existing businesses and attract new ones to the downtown area. Since 1980, this program of the [National Trust for Historic Preservation](#), has been working with communities across the nation to revitalize their historic or traditional commercial areas. Based in historic preservation, the Main Street approach was **developed to save historic commercial architecture and the fabric of American communities' built environment**, but has become a **powerful economic development tool** as well.

GREEN RIBBON COMMISSION MEMBERS APPOINTED

- (8/3/04) Governor Rendell announced the appointments of Kathleen McGinty, Secretary of the [Department of Environmental Protection](#), Michael DiBerardinis, Secretary of the [Department of Conservation and Natural Resources](#) and Roy Kienitz, Deputy Chief of Staff to the Governor, to a Green Ribbon Commission – a commission established by the Legislature to examine and develop recommendations to fortify the commonwealth's environmental investment programs. The Commission will study the state's environmental programs and recommend funding options to continue the programs.

REPORT ON AGRICULTURAL CONSERVATION EASEMENT PROGRAMS

- The [National Assessment of Agricultural Easement Programs](#), a joint project of [American Farmland Trust](#) and the Agricultural Issues Center of the University of California, Davis, has released its first report reviewing the progress and experiences of 46 leading agricultural conservation easement programs in 15 states. The [report](#) profiles each program with details of its easement accomplishments, funding, organization, origins, acquisition strategies, connections to local planning, population and agricultural characteristics. **"Lancaster was the first Pennsylvania County to acquire agricultural easements."**



ARE PENNSYLVANIA'S PRIORITIES CHANGING?

- [IssuesPA](#) takes a look at spending trends in the state's budget and asks, 'are the state's priorities changing?' IssuesPA is a nonpartisan effort launched by [The Pennsylvania Economy League](#) to raise the issues most important to Pennsylvania's future economic competitiveness. **"Making major changes in the budget is like steering an aircraft carrier in a new direction: the tremendous force of inertia - the status quo - must be overcome. Most of the money in the state budget is "locked in" by formulas, federal mandates, constituency groups, tradition, and other factors. By design, moving the state's ship in new directions will require policy makers to make firm, major commitments over time."**

Upcoming Events

National Issues, Local Impact – A Lancaster Chamber of Commerce & Industry Wake-up to the Issues breakfast presentation. Explore how national issues affect business in Lancaster County. Thursday, August 19, 2004, 7:30 to 9:00 a.m. - The Eden Resort Inn & Conference Center. [For more information.](#)

Strategy for Regional Prosperity – A Fall Summit, sponsored by the South Central Assembly for Effective Governance, has been scheduled for Thursday, October 14, 2004 in the Wildwood Conference Center at Harrisburg Area Community College. The Summit will examine the prosperity of South Central Pennsylvania. [The Brookings Institution](#) report, [Back to Prosperity: A Competitive Agenda for Renewing Pennsylvania](#), will be a major focus of the day. [For more information.](#)

Interesting Websites/Reports/Books:

The [Low Impact Development Center](#) (LID), Inc. is a non-profit 501 (c)(3) organization dedicated to research, development, and training for water resource and natural resource protection issues.

[Growth Management and Affordable Housing - Do They Conflict?](#) By Anthony Downs, ed. Of the Brookings Institution –

[Smart Growth – A Primer](#)

[The Impacts of Co2 and Climate Change on Public Health in the Inner City](#)

*Enabling informed growth management
decision-making for Lancaster County*

Call our office (717) 295-0755, Or visit <http://www.hourglassfoundation.org>

HOURGLASS

FOUNDATION